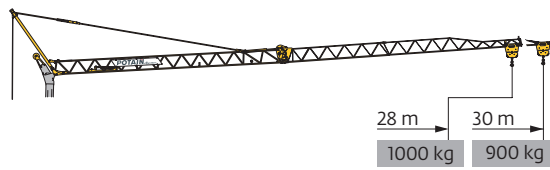
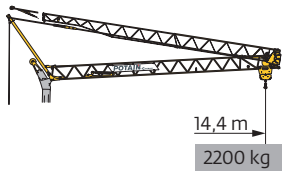
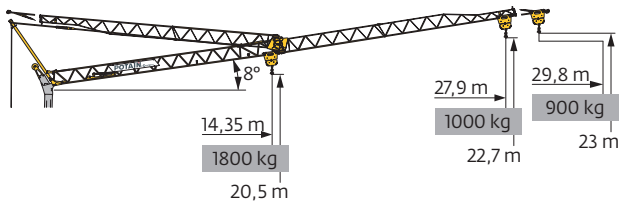


Courbes de charges / Lastkurven / Load curves / Curvas de cargas / Curve di carico
 Curvas de carga / Кривые нагрузок

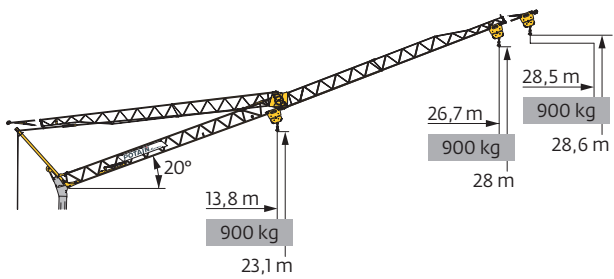


30 m	3	▶	14,4 m
▲▲▲▲	☐		2200 kg
28 m	3	▶	14,4 m
▲▲▲▲	☐		2200 kg

3	▶	14,4	15	16	17	18	19	20	21	22	23	24	25	26	27	28	29	30	m
		2200	2095	1935	1800	1680	1570	1480	1395	1315	1245	1185	1125	1075	1025	980	940	900	kg
3	▶	14,6	15	16	17	18	19	20	21	22	23	24	25	26	27	28	m		
		2200	2135	1975	1835	1710	1600	1505	1420	1340	1270	1205	1150	1095	1045	1000	kg		








30 m	3	▶	16,9	17	18	19	20	21	22	23	24	25	26	27	28	29	29,8	m
▲▲▲▲	☐		1800	1785	1665	1560	1465	1380	1305	1235	1175	1120	1065	1015	970	930	900	kg
28 m	3	▶	17,2	18	19	20	21	22	23	24	25	26	27	27,9	m			
▲▲▲▲	☐		1800	1705	1595	1500	1415	1335	1265	1200	1145	1090	1040	1000	kg			



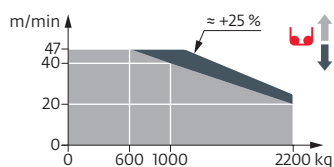
30 m	3	▶	28,5	m
▲▲▲▲	☐		900	kg
28 m	3	▶	26,7	m
▲▲▲▲	☐		900	kg

Mécanismes / Triebwerke / Mechanisms / Mecanismos / Meccanismi
 Mecanismos / Механизмы

400 V - 50 Hz 480 V - 60 Hz							ch - PS hp	kW		
	10 LVF 11 Optima	m/min	3,5	12	20	40	47	10	7,5	
		kg	2200	2200	2200	1000	600			
	2 DVF 4	m/min	15 - 30 (900 → 2200 kg) 15 - 30 - 40 (100 → 900 kg) 15 - 30 - 47 (0 → 100 kg)					2	1,5	
		tr/min U/min rpm	0 → 0,8							
	RVF 31 Optima+								2	1,5

 IEC 60204-32	 kVA
400 V (+10% -10%) 50 Hz 480 V (+6% -10%) 60 Hz	14 kVA

10 LVF 11 Optima



Montage / Montage / Erection / Montaje / Montaggio
 Montagem / Монтаж

